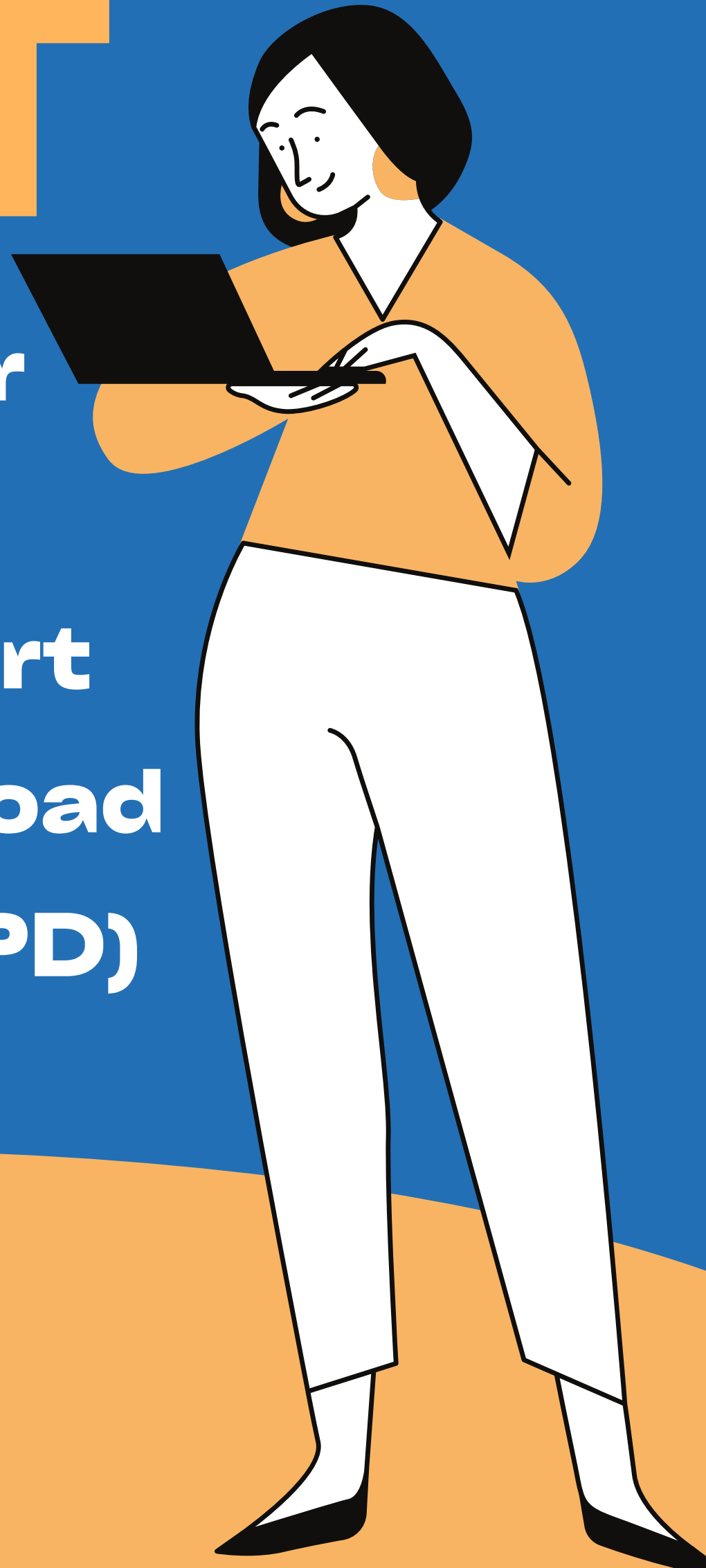


SENT

**Instructions for
using SENT
system to report
International Road
Transport (RMPPD)**



#01

Who must report in the SENT system?

In accordance with the applicable regulations, the obligation to register in the SENT register applies to:

From 1 November 2024 – carriers from outside the EU, the Swiss Confederation and EFTA.

From 1 January 2025 – carriers from other EU countries, the Swiss Confederation or EFTA.

The carrier is obliged to report the transport if it is carried out to or from a country outside the EU, on the basis of a permit resulting from an international agreement.



#02

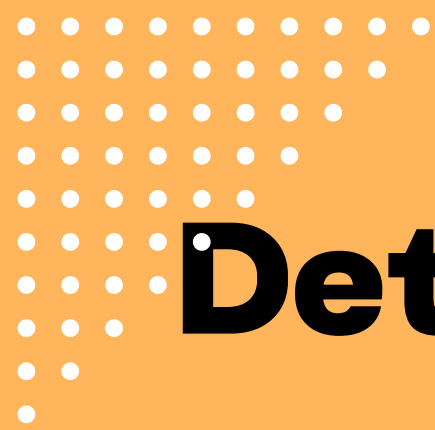
Before starting transport through Poland, you must:

1. Register an account on the PUESC platform (<https://puesc.gov.pl>) – to access the system, you must create an account or log in if you already have an account.
2. Select the appropriate form:
 - a. RMPD100 – carrier notification of transport;
 - b. RMPD – Update – update of already reported transport;
 - c. RMPD406 – driver verification of the notification status.

After selecting the form, fill in all fields carefully, including the carrier, recipient/sender details and the transport route.

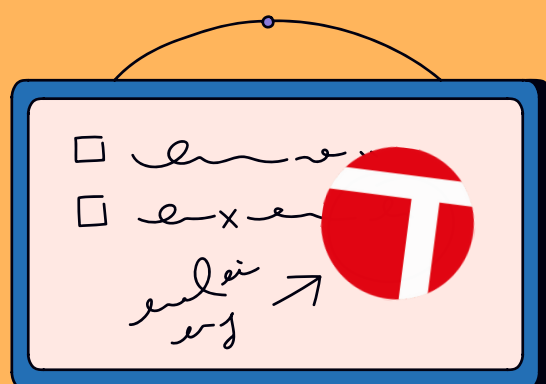


#03



Details of filling out the form

- **With the transport of goods** – check the "journey with goods" box, then fill in the fields regarding the sender and recipient in detail.
- **Without the transport of goods** – leave the "journey with goods" box empty, and fields 4 and 5 will be inactive.
- **Transit transport** – with a larger number of recipients/senders, one selected sender or recipient should be indicated, in accordance with the transport document.
- **Recipients of goods in Poland** – if the goods will be unloaded in several places, provide the recipient/sender details for the last unloading point.



Important!

In the case of transport during which only one transport permit is required and the number of recipients in Poland is greater than 1, the details of the recipient/sender of the goods where the last unloading will take place in the territory of the Republic of Poland should be provided.



#04

Important information regarding the reference number

The reference number that confirms the notification is **valid for 10 days from the date it was sent**. It is therefore worth reporting the transport in advance to avoid problems at the border or during road checks.





#05

Document replacing the notification

In the event of unavailability of the PUESC platform, you can report the transport to the Chief Inspector of Road Transport by e-mail to the following address: **awaria.zezwolenia@gitd.gov.pl**. In such a case, you should attach a PDF document replacing the report and wait for confirmation of receipt of the report.



#06

Sanctions for failure to report

Failure to comply with the obligation to report may result in:

- Detention of the vehicle by inspection services;
- Imposition of financial penalties;
- Inability to continue transport without regulating the legal situation.



QUESTIONS ?

we are waiting for you 24/7

acterminus.pl

+48 85 742 46 76